

# Logamatic Mounting Bracket Instruction Sheet

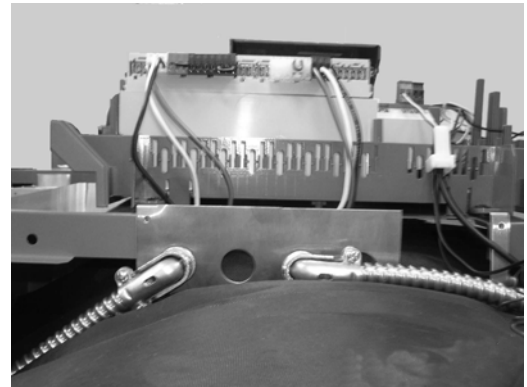
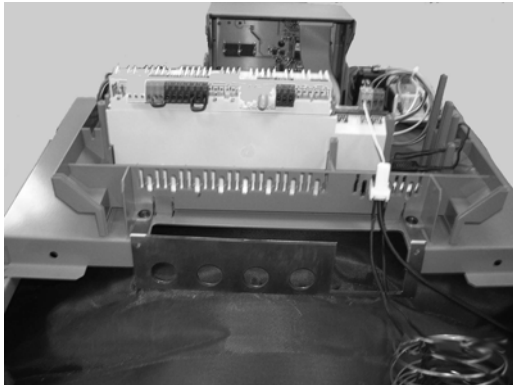
**2/02/05**

The Logabacket is designed to create strain relief for your line voltage and low voltage wiring for the R2107 and R2109 Logamatics. The bracket is mainly designed for use with the G115 and G124X boilers, but with minor modifications can be used on other boiler models as well.

## **G115, G124X**

Remove top cover plate and top rear panel jacket cover. Line the bracket up with holes and place the Logamatic in place over the holes and secure with screws provided.

Four conduit connections are provided for high voltage wiring; a slotted opening is used to run low voltage sensor wiring.



## **G215**

It is necessary to bend down the tabs on the to rear jacket panel to prevent interference between bracket and jacket panel.

## **G234X, G334X**

Simply cut off the tabs from the bracket and mount the bracket to the rear panel by drilling an additional hole for a second mounting screw.

## **GA124, GA244**

These boilers do not require the bracket as strain relief connections are provided on the rear of the boiler.

